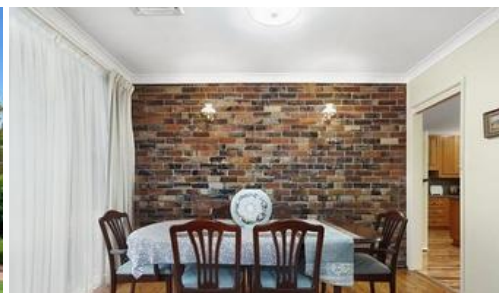


Leased

26 Sylvan Gr, Picnic Point



## REDUCED.....Neat as a Pin....terrific family home.

Neatly presented with polished floorboards throughout.

No dirty or dusty carpets to contend with, making this an allergy-free friendly home!

Are you looking for comfort & quality with spacious living areas?

Low maintenance & easy care. Cul de sac location?

Features an updated open plan kitchen, a family friendly layout, ducted air-conditioning, timber flooring, master bedroom with ensuite & walk in robe. Three bedrooms plus a games, rumpus or media room.

Located just moment's to popular schools, shops and transport. Ready to move straight in.

Register your interest with us now so we can arrange an inspection. Applications are only available upon an inspection.

Disclaimer: "We have obtained all information in this document from sources we believe to be reliable; however, we cannot guarantee its accuracy. Prospective tenants are advised to carry out their own

3 2 1

**Price** \$595.00 per week

**Property Type** rental

**Property ID** 50

**Land Area** 550 m2

### Agent Details

Mark Sawyer J.P - 0408 656 126

Michelle Murray - 0403 195 465

### Office Details

Alive Realty

02 9730 2799



The above information provided has been furnished to us by the vendor/s. We have not verified whether or not that information is accurate and do not have any belief in one way or the other in its accuracy. We do not accept any responsibility to any person for its accuracy and do no more than pass it on. All interested parties should make and rely upon their own inquiries in order to determine whether or not this information is in fact accurate.